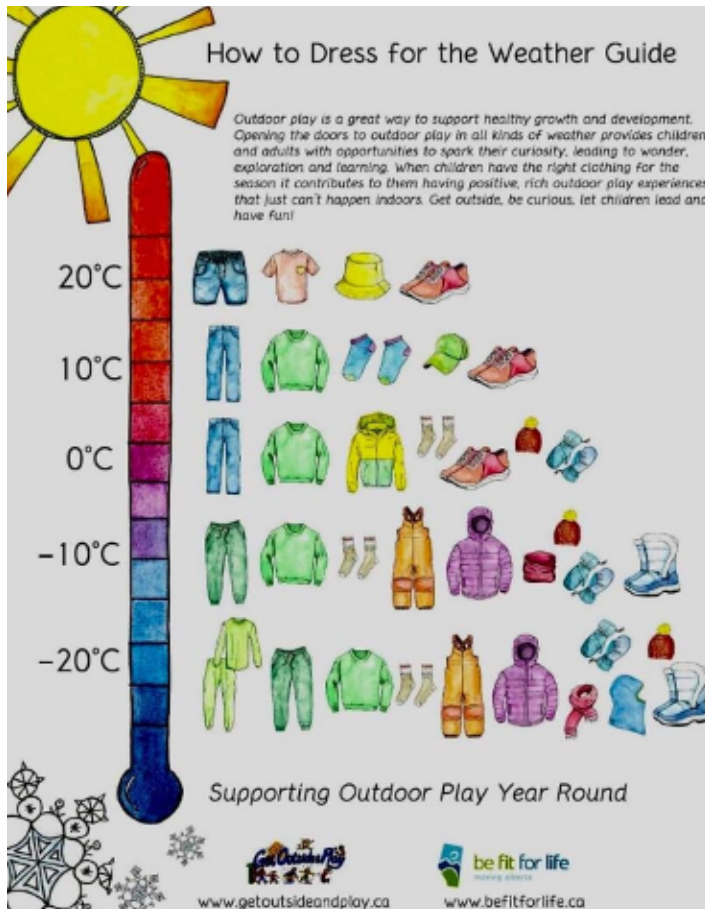


# Fowlmere Flyer

## DRESSING FOR THE WEATHER



As the mornings and days are getting colder please can you make sure that children are wearing the appropriate clothing for the weather. Please see the illustration attached for a visual guide to clothing requirements.

Any questions please do not hesitate to contact us.

Children are welcome to bring in a bag to leave at school with the additional items in so they are always available if needed.

## HOT CHOCOLATE AND COOKIE FRIDAYS

On Friday's from 3:15pm Kid choice Aferschool Club will be continuing to sell Cookies and Hot chocolate from the Hall doors. At Kids Choice we like to promote the Three R's (Reduce, Reuse & Recycle)

We use biodegradable coffee cups and offer parents to bring their own reusable cups to prevent waste.

There is a range of cookies available for 50p each, and a hot chocolate with cream and marshmallows is £1 each

If you bring your own cup you can have a cookie and a Hot chocolate for £1

Instead of £1.50 when using one of our biodegradable cups.

We look forward to seeing you there .



# FOWLMERE PRIMARY PTFA 100 CLUB

We are very lucky to have an amazing 100 club that is ran for the school PTFA .  
The 100 club has raised much needed money for the school over the years and continues to do so with its monthly draws .

You can purchase a ball for £5 (max 2 balls per month) and you will be entered into each monthly draw to be in the chance of winning one of the 6 cash prizes on offer.

If you would like to become a member please follow

[https://docs.google.com/forms/d/e/1FAIpQLSc8JcPwbC4M85eaOiiAG7MIkmqt5PEx5TvHzw-JRmalcD\\_7lg/viewform](https://docs.google.com/forms/d/e/1FAIpQLSc8JcPwbC4M85eaOiiAG7MIkmqt5PEx5TvHzw-JRmalcD_7lg/viewform)

# KIDS CHOICE AFTER SCHOOL CLUB

This is a reminder that if you need to make contact with Kids choice after school club please email the club manager Mrs Toni Parker via

[kidschoicefowlmere@gmail.com](mailto:kidschoicefowlmere@gmail.com)

Please email with any late bookings, queries or questions and she will be happy to deal with these for you.

## January

Monday 8th - 'Big Question Absorption Day - 'What is our Footprint on the world'

Monday 15th - Starlings Class - Forest school

Wednesday 17th - Owls Class - friendship games at MVC (12 children)

Monday 22nd - Goldfinches Class - Forest School

Monday 29th - Kingfishers Class - Forest School

## February

Monday 5th - Owls Class - Forest School

Tuesday 6th - Safer Internet Day

Friday 9th - Chinese New Year

Monday 12th - Starlings Class - Forest School

Monday 12th - Charles drawin Day

Tuesday 13th - The Great Pancake Toss

Friday 16th - Achievement Assembly - Parents Welcome

# February

Monday 19th - Half Term

Monday 26th - Back To School - Sustainability Week

Monday 26th - Goldfinches Class Forest School

# March

Monday 4th - Friday 8th - 'For the Love of Reading Week'

Monday 4th - Kingsfishers Class Forest school

Thursday 7th - World Book Day

Friday 8th - Mother's Day Lunch

Monday 11th - Owls Class Forest school

Tuesday 12th - Rev David - Assembly

Friday 15th - Comic Relief

Wednesday 20th - Book Fair

Thursday 21st - Book Fair

Friday 22nd - Book Fair

Tuesday 26th - Purple Day - Epilepsy Awareness Day

Thursday 28th - The Great Egg Fling

Thursday 28th - End of Term

# April

Dates TBC

# May

Sat 18th - Fowlmere Art Exhibition - Helpers needed

Sun 19th - Fowlmere Art Exhibition- Helpers needed